

Shenzhen LCS Compliance Testing Laboratory Ltd.

Add: Unit F-G, Floor 23, Kechuang Building, Quanzhi Innovation Science and Technology Park, Shajing Town, Bao'an District, Shenzhen, Guangdong, China

Tel: (86)755-23353209

Internet: Http://www.LCS-cert.com

Report No.: LCS171221068AR

TEST REPORT

Client company : XIANNING LONGSHENG PLASTIC HARDWARE PRODUCT FACTORY
 Client address : TEAM NO.7 ZHANGUAN VILLAGE XIANYANGHU TOWN XIANNING CITY HUBEI CHINA
 Manufacturer : XIANNING LONGSHENG PLASTIC HARDWARE PRODUCT FACTORY
 Address : TEAM NO.7 ZHANGUAN VILLAGE XIANYANGHU TOWN XIANNING CITY HUBEI CHINA

Report on the submitted samples said to be:

Sample Name : Silicone Butt Plug
 Trade Mark : N/A
 Style/ Item No. : LS-GJ-001, LS-GJ-002, LS-GJ-003, LS-GJ-004, LS-GJ-005, LS-GJ-006, LS-GJ-007, LS-GJ-008, LS-GJ-009, LS-GJ-010, LS-GJ-011, LS-GJ-012, LS-GJ-013, LS-GJ-014, LS-GJ-015, LS-GJ-016, LS-GJ-017, LS-GJ-018, LS-GJ-019, LS-GJ-020, LS-GJ-021, LS-GJ-022, LS-GJ-023,LS-GJ-024, LS-GJ-025
 Sample Receiving Date : December 22, 2017
 Testing Period : December 22, 2017 ~ January 11, 2018
 Results : Please refer to next page(s).

Summary of Test Results:

TEST REQUEST

CONCLUSION

A EU RoHS Directive 2011/65/EU and its amendment directives

PASS

Signed for and on behalf of LCS

Written By: Linda Ning
 Linda Ning

Checked by: Suez Su
 Suez Su

Approved by: Fung Xiao

 Fung Xiao

Results:

A. EU RoHS Directive 2011/65/EU and its amendment directives on XRF

Test method: With reference to IEC 62321-3-1:2013, Screening by X-ray Fluorescence Spectroscopy (XRF)

Seq. No.	Tested Part(s)	Results				
		Pb	Cd	Hg	Cr	Br
A	Silicone Butt Plug					
1	Adult erotica products	BL	BL	BL	BL	BL
2	Pink plastic shell	BL	BL	BL	BL	BL
3	Green plastic film	BL	BL	BL	BL	BL

Note:

- = Not Conducted
- * = Screening by XRF and detected by chemical method. The test results of chemical method please refer to next pages.

i Results were obtained by XRF for primary screening, and further chemical testing by ICP (for Cd, Pb, Hg), UV-Vis (for Cr(VI)) and GC-MS (for PBBs, PBDEs) are recommended to be performed, if the concentration exceeds the below warning value according to IEC 62321-3-1:2013.

Element	Unit	Non-metal	Metal	Composite Material
Cd	mg/kg	$BL \leq 70 - 3\sigma < X < 130 + 3\sigma \leq OL$	$BL \leq 70 - 3\sigma < X < 130 + 3\sigma \leq OL$	$BL \leq 50 - 3\sigma < X < 150 + 3\sigma \leq OL$
Pb	mg/kg	$BL \leq 700 - 3\sigma < X < 1300 + 3\sigma \leq OL$	$BL \leq 700 - 3\sigma < X < 1300 + 3\sigma \leq OL$	$BL \leq 500 - 3\sigma < X < 1500 + 3\sigma \leq OL$
Hg	mg/kg	$BL \leq 700 - 3\sigma < X < 1300 + 3\sigma \leq OL$	$BL \leq 700 - 3\sigma < X < 1300 + 3\sigma \leq OL$	$BL \leq 500 - 3\sigma < X < 1500 + 3\sigma \leq OL$
Cr	mg/kg	$BL \leq 700 - 3\sigma < X$	$BL \leq 700 - 3\sigma < X$	$BL \leq 500 - 3\sigma < X$
Br	mg/kg	$BL \leq 300 - 3\sigma < X$	--	$BL \leq 250 - 3\sigma < X$

Shenzhen LCS Compliance Testing Laboratory Ltd.

Add: Unit F-G, Floor 23, Kechuang Building, Quanzhi Innovation Science and Technology Park, Shajing Town, Bao'an District, Shenzhen, Guangdong, China

Tel: (86)755-23353209

Internet: [Http://www.LCS-cert.com](http://www.LCS-cert.com)

Report No.: LCS171221068AR

Note:

- BL = Below Limit
- OL = Over Limit
- X = Inconclusive

- ii The XRF screening test for RoHS elements – The reading may be different to the actual content in the sample be of non-uniformity composition.
- iii The maximum permissible limit is quoted from the document 2005/618/EC amending RoHS directive 2011/65/EU:

RoHS Restricted Substances	Maximum Concentration Value (mg/kg) (by weight in homogenous materials)
Cadmium (Cd)	100
Lead (Pb)	1000
Mercury (Hg)	1000
Hexavalent Chromium (Cr(VI))	1000
Polybrominated biphenyls (PBBs)	1000
Polybrominated diphenylethers (PBDEs)	1000

Disclaimers:

This XRF Screening report is for reference purposes only. The applicant shall make its/his/her own judgment as to whether the information provided in this XRF screening report is sufficient for its/his/her purposes.

The result shown in this XRF screening report will differ based on various factors, including but not limited to, the sample size, thickness, area, surface flatness, equipment parameters and matrix effect (e.g. plastic, rubber, metal, glass, ceramic etc.). Further wet chemical pre-treatment with relevant chemical equipment analysis are required to obtain quantitative data.

Shenzhen LCS Compliance Testing Laboratory Ltd.

Add: Unit F-G, Floor 23, Kechuang Building, Quanzhi Innovation Science and Technology Park, Shajing Town, Bao'an District, Shenzhen, Guangdong, China

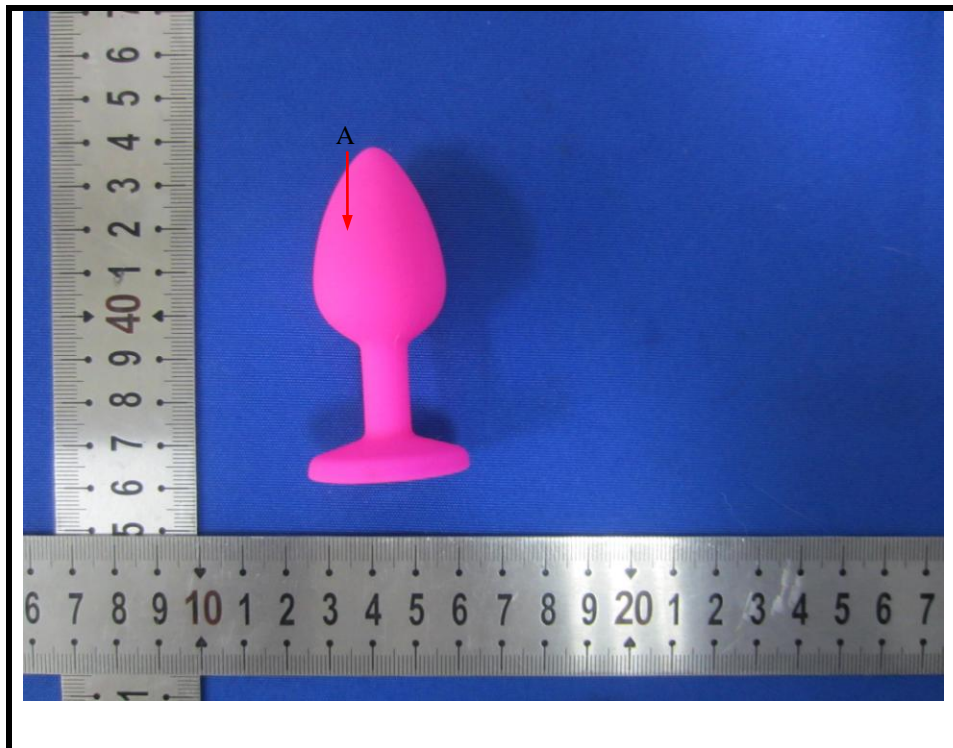
Tel: (86)755-23353209

Internet: [Http://www.LCS-cert.com](http://www.LCS-cert.com)

Report No.: LCS171221068AR

Appendix

Photograph of Sample



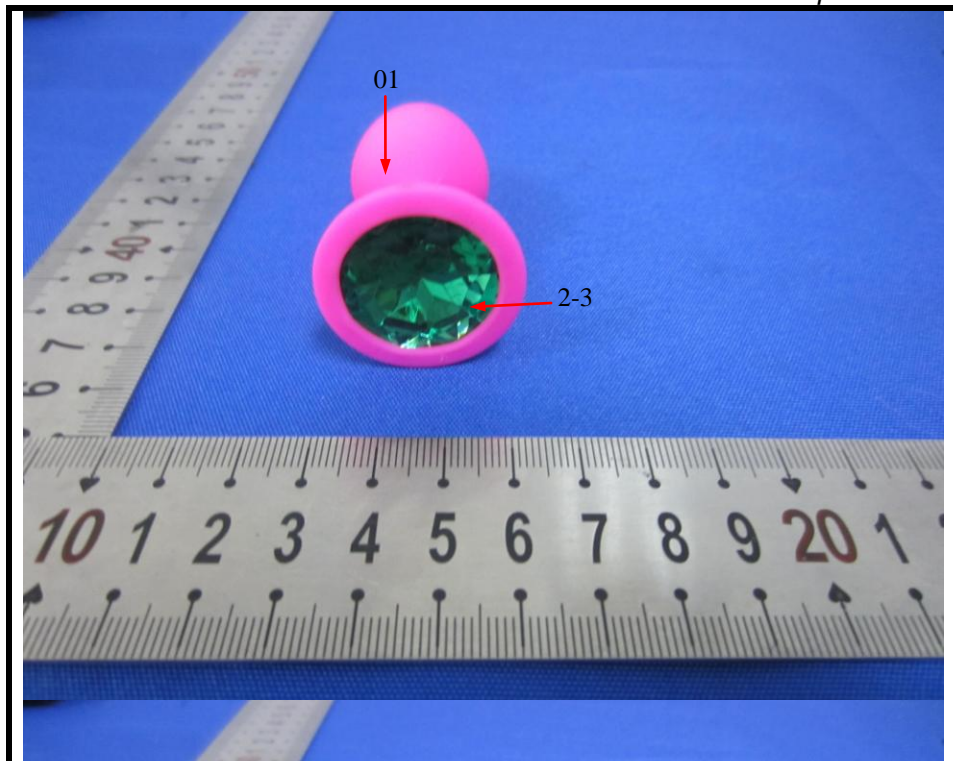
Shenzhen LCS Compliance Testing Laboratory Ltd.

Add: Unit F-G, Floor 23, Kechuang Building, Quanzhi Innovation Science and Technology Park, Shajing Town, Bao'an District, Shenzhen, Guangdong, China

Tel: (86)755-23353209

Internet: [Http://www.LCS-cert.com](http://www.LCS-cert.com)

Report No.: LCS171221068AR



LCS authenticate the photo on original report only

***** End of Report *****

The test report is effective only with both signature and specialized stamp. The result(s) shown in this report refer only to the sample(s) tested. Without written approval of LCS, this report can't be reproduced except in full.